

## MCB-2

### Strapping Machine



- Integrated Squaring & Strapping
- Automatic Set-up
- Straps Parallel to Flute
- Positive Bundle Control Throughout



# MCB-2

## Standard Features

- Fully automatic bundle squaring/strapping system accepts single bundles from pacer conveyor, squares the bundle and places a single strap in the travel direction as required. 'Square Only' and 'Bypass' modes also available.
- Strapping across flaps typically reduces strap consumption and yields flatter bundles than conventional bundle strapping.
- Automatic setup feature senses first bundle dimensions and sets squaring and press positions for the run. Machine alignment with bundle center and strap positioning on bundle are accomplished using touchscreen push buttons.
- Offers continuous top and bottom bundle control from machine entry through exit to provide secure squaring and strapping of unstable bundles.
- The MCB-2 offers a drape type strapping system with positive delivery of the strap to the sealer head. Proven heat seal technology.
- Six powered exit belts provide perfect bundle transport and increased productivity.
- Coil dispenser, control panel and sealer access are all positioned on the same side of the machine for operator convenience.
- Optional dual coil dispensers with automatic coil change eliminates coil change related process interruptions. Other dispenser options available.
- Throughput capability up to 24 bundles per minute keeps pace with the fastest new flexo lines.

EAM-Mosca is a strapping systems provider dedicated to providing high performance solutions to production driven customers. This is evident in our equipment technology, strapping that is designed and produced to optimize system operation and in our parts and service support that keeps the system operating at peak performance throughout its life.



Tilt-up exit table provides excellent working access to sealing head for cleaning and servicing.

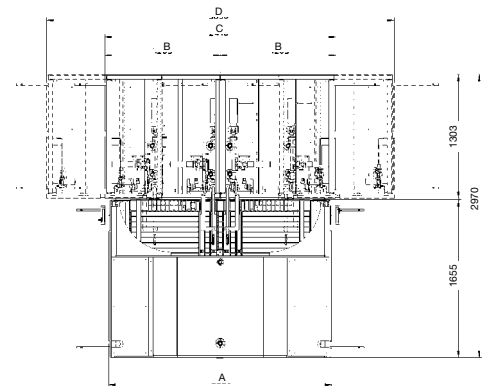
## Technical Data

**Production Rate:** Up to 24 Bundles/Minute  
**Strapping:** 5mm, 6mm, 8mm, 9mm Machine Grade PPY  
**Electrical:** 200-575v 3pH, 50/60 hz, 5.3 KVA  
**Strap Tension:** DC Motor Controlled, adjustable to 80 lbs.  
**Strap Seal:** Heat-Seal, Electronic Temperature Controlled  
**Conveyor Height:** 800 - 1040mm (31.5" - 41")  
**Machine Color:** Mosca Blue RAL 5010  
**Machine Shipping Weight:** Approximately 3500 Lbs. depending upon model.

### Options:

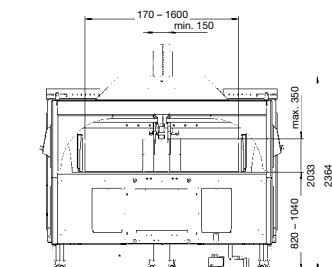
- Wireless or hardwired Ethernet for remote troubleshooting.
- Analog speed control module for convenient adjustment of all drives through a single selector.
- Pacer conveyor with optional height-adjustable press to assure proper pacing and maintenance of bundle integrity during transport of bundles between counter-ejector and MCB-2.
- Dual coil dispensers with automatic coil change
- Powered adjustment of machine centerline.
- Trouble light and low strap indicator.

| Minimum Package Sizes   |            |        |            |        |
|-------------------------|------------|--------|------------|--------|
|                         | MCB-2 1300 |        | MCB-2 1600 |        |
| Length                  | 170mm      | 6.7"   | 170mm      | 6.7"   |
| Width                   | 170mm      | 6.7"   | 170mm      | 6.7"   |
| Height                  | 40mm       | 1.6"   | 40mm       | 1.6"   |
| Maximum Packaging Sizes |            |        |            |        |
| Length                  | 1300mm     | 51"    | 1300mm     | 51"    |
| Width                   | 1300mm     | 51"    | 1600mm     | 63"    |
| Height                  | 350mm      | 13.75" | 350mm      | 13.75" |



### Dimensions:

| MCB | 1300 | 1600 |
|-----|------|------|
| A   | 2000 | 2300 |
| B   | 1205 | 1205 |
| C   | 2410 | 2410 |
| D   | 3330 | 3630 |



**EAM-Mosca Corporation**  
 675 Jaycee Drive  
 Hazle Township, PA 18202  
 ph: 800.456.3420  
 570.459.3426  
 fx: 570.455.2442  
 www: info@eammosca.com  
 www.eammosca.com

In Canada, call or write:  
**EAM-Mosca (Canada) Ltd.**  
 170 William Smith Drive  
 Whitby, Ontario L1N 9N3  
 ph: 905.665.8225  
 fx: 905.665.8188