

# ROMMC-6 SoniXs

REVOLUTIONIZE YOUR  
END-OF-LINE [PACKAGING]  
PERFORMANCE



Operator Cycled Strapping Machine



Standard 6 SoniXs® Ultrasonic Sealer



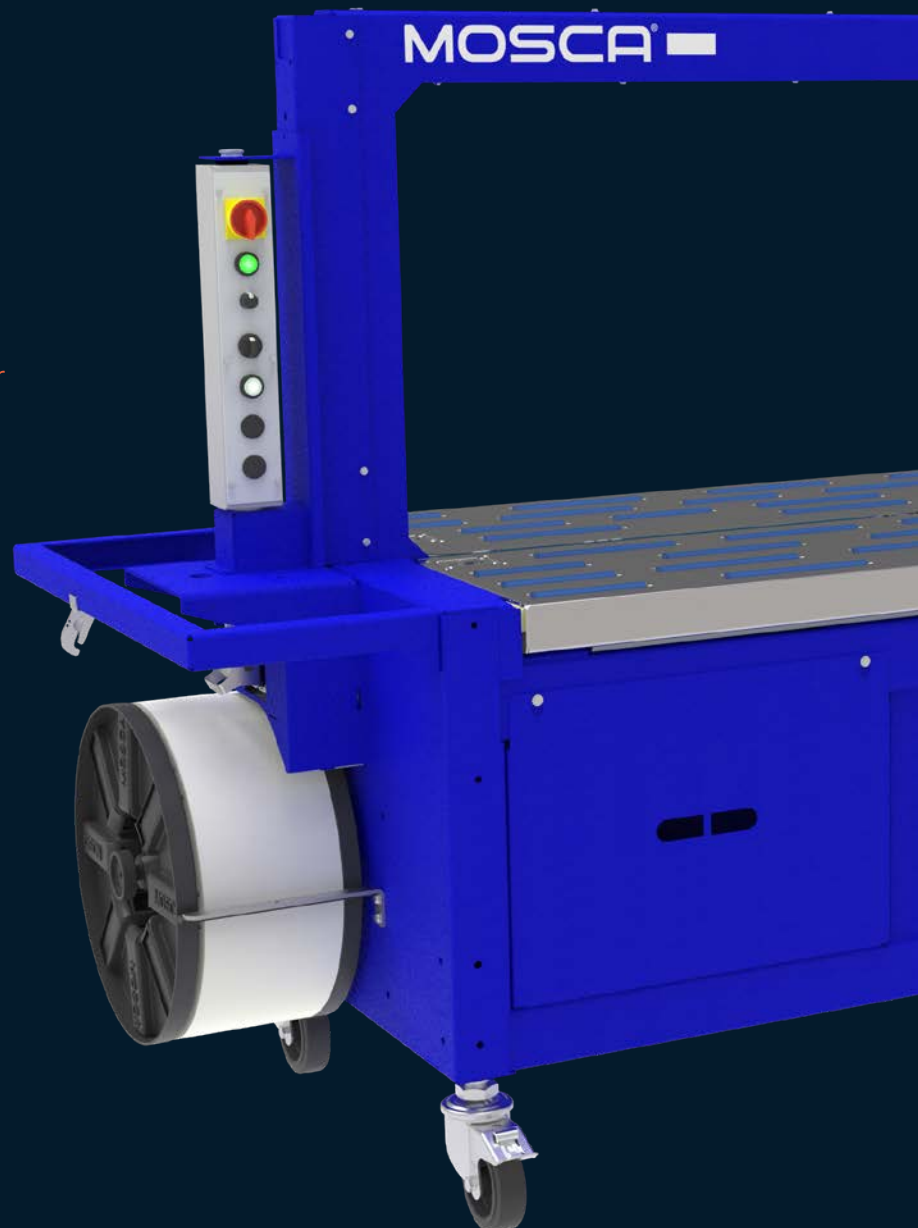
Track Size Up To 2800mm Wide



Up To 30 Bundles Per Minute



Machine Options Available



EAM — MOSCA®

# ROMC-6 SoniXs

## WALK UP STRAPPING MACHINE FOR LARGER PRODUCT BUNDLING & CLOSING APPLICATIONS

The ROMC-6 SoniXs® operator cycled machine features a wide arch suited well to strapping large products like windows and doors. Features include a robust reinforced cabinet design with a gravity roller tabletop. Manual controls are available via the side panel or optional footswitch for easy hands-free strapping. In the corrugated industry, this machine applies individual straps to large boxes and to bulk bins for reinforcement.



## The Ultimate Strap Sealing Solution

Mosca's proprietary SoniXs® ultrasonic sealing heads have revolutionized strapping systems offering significant and proven advantages over traditional heat-seal technologies, including cost, maintenance, and longevity across all industries and applications.

Unlike heat seal systems, SoniXs® strap seals are made without the use of high-temperature components, reducing energy costs, improving safety, and generating lower emissions.

A SoniXs® seal is harder to break, and the visible evidence of a break is irreversible. The distinctive impression on Mosca's ultrasonically-sealed strap makes it easy to identify if the packaging has been tampered with. The seal will be distinguishably different if a strap is removed and reapplied.

---

### Key Benefits

- + INCREASED SEAL STRENGTH
  - + COST SAVINGS
  - + LASTING DURABILITY
  - + CONSISTENT SEALING
  - + WORRY-FREE PRODUCT SECUREMENT
  - + ENERGY CONSERVATION
  - + LOW MAINTENANCE
  - + SEALS BOTH PP AND PET
-

---

## TECHNICAL SPECIFICATIONS

---

### Production Rate

Up to 30 bundles per minute, depending on track size

---

### Track Size

1250mm x 600mm (49" x 23.5")  
1650mm x 600mm (65" x 23.5")  
2200mm x 600mm (86.5" x 23.5")  
2600mm x 600mm (102" x 23.5")  
2800mm x 600mm (110" x 23.5")  
(Other sizes available on request)

---

### Electrical

110-220v 60 Hz, 0.5 KVA

---

### Table

Gravity roller table top

---

### Table Height

Standard: 30.5" - 39.4" (775mm - 1001mm)  
Risers required: 38.5" - 55" (978mm - 1397mm)  
Outriggers required: 26" - 33.5" (661mm - 851mm)

---

### Strapping

SoniXs® sealer runs PP strap from 5-12mm and select PET straps.

---

### Strap Tension

Infinitely adjustable from 10 - 60 Lbs.

---

### Strap Seal

SoniXs® ultrasonic seal

---

### Seal Location

Bottom center seal

---

### Machine Shipping Weight

Approx. 1350 Lbs.

---

### Casters

Two swivel-lock casters, Two fixed casters

---

## OPTIONS

---

- + Photo Eye (for automatic cycle start)
- + Light tower
- + Double pneumatic press
- + Cycle complete indicator
- + Signal exchange

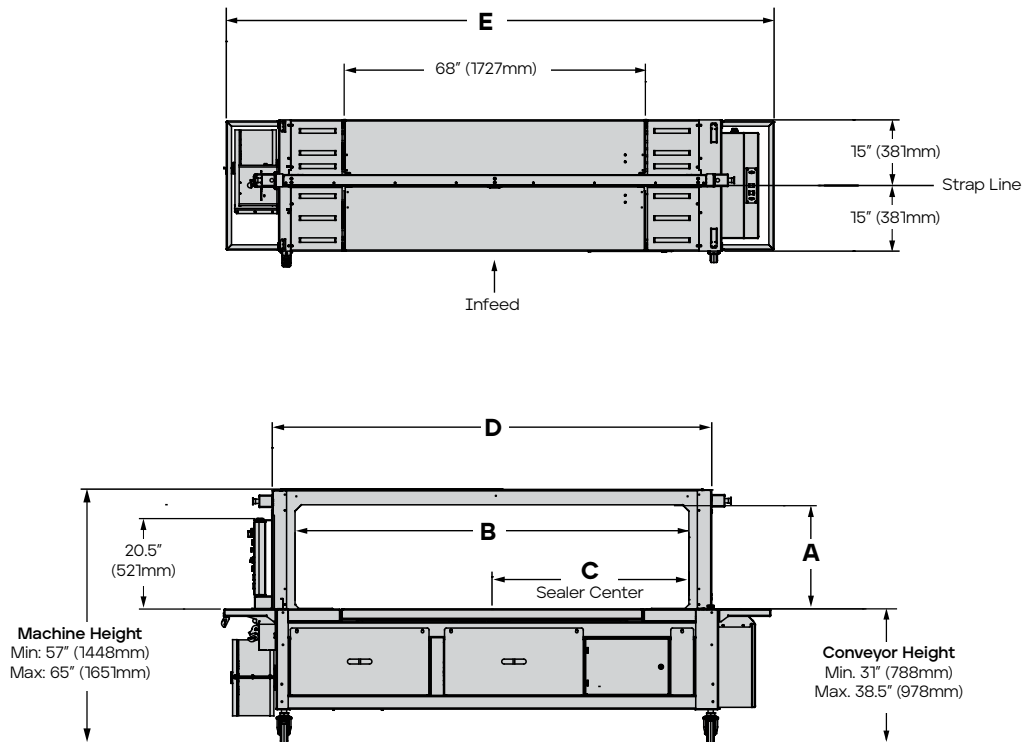
SCAN  
HERE



Want to see the  
ROMC-6 SoniXs®  
in action? Use  
the QR code  
to learn more.

# MACHINE DIMENSIONS

	MACHINE ARCH SIZE									
	1250 x 600		1650 x 600		2200 x 600		2600 x 600		2800 x 600	
	Inches	mm	Inches	mm	Inches	mm	Inches	mm	Inches	mm
<b>A</b>	23	590	23	590	23	590	23	590	23	590
<b>B</b>	49	1250	65	1650	86.5	2200	102.5	2600	112.5	2860
<b>C</b>	24.5	625	32.5	825	43.5	1105	51	1300	55	1400
<b>D</b>	62	1575	78	1975	99.5	2525	115	2925	123	3122
<b>E</b>	86	2190	102	2590	123.5	3140	139.5	3540	147	3738



CONTACT US FOR A FREE CONSULTATION TODAY  
[www.eammosca.com](http://www.eammosca.com) | [info@eammosca.com](mailto:info@eammosca.com)

## U.S.A., Latin America & The Caribbean

**EAM-Mosca Corporation**  
 675 Jaycee Drive, Hazle Township, PA 18202  
 Phone: +1 800.456.3420 / +1 570.459.3426  
 Fax: 570.455.2442

## Canada

**EAM-Mosca Canada Ltd.**  
 170 William Smith Drive, Whitby, Ontario, L1N 9N3  
 Phone: +52 800.633.6392 / +52 905.665.8225  
 Fax: 905.665.8188